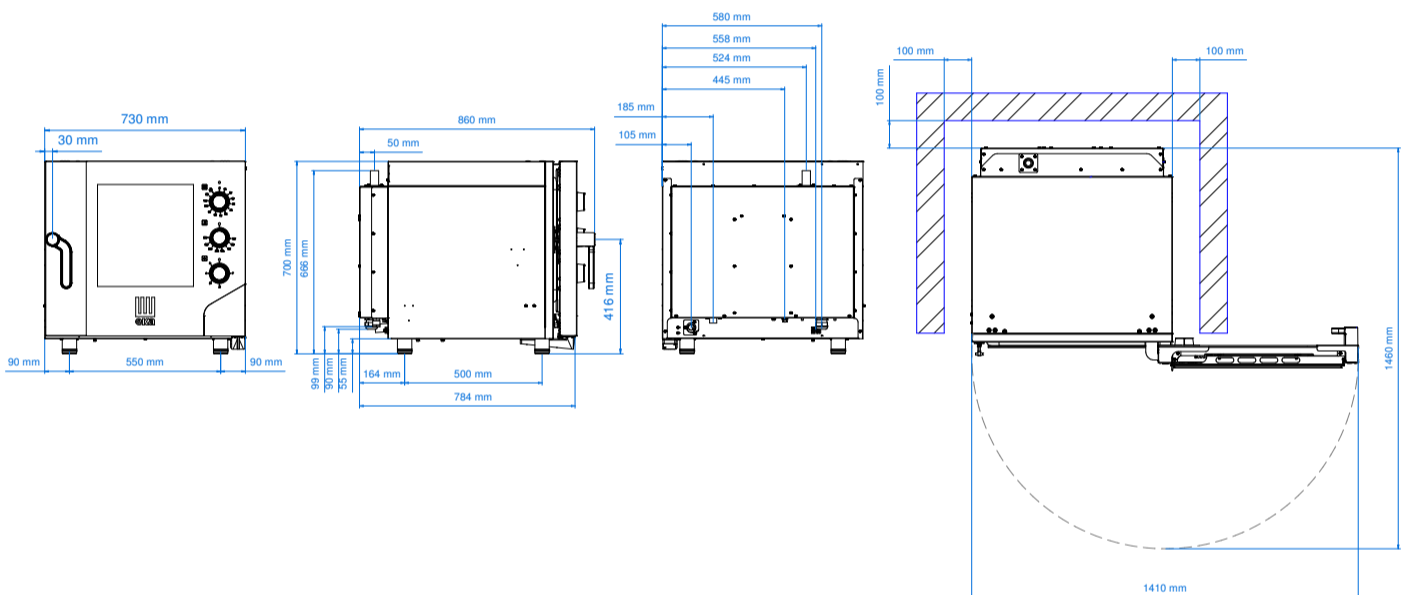


MKF 511 S



Electric combi oven 5 trays 1/1 GN with electromechanic panel

Quality and reliability are its strengths, the MKF 511 S oven, like the entire generation of MILLENNIAL ovens, is designed for the chef looking for a simple oven, but one that is at the same time complete, essential and SMART!



Plus

	Voltage (V) : AC 220/230 3 PH
Available on request at the order	Voltage (V) : AC 220/230
	Left side opening door *
Adjustable door hinges	

Equipment

Cardboard box dimensions with pallet (WxDxH mm)	790 x 905 x 865
Lateral supports	1 right + 1 left
Cable	Two-phase+neutral [5G 2,5]-L=1600 mm
Manual washing predisposition	
Condensate collection bowl, with drain on door	
Hinge with door locking for openings adjusted at 60°, 90°, 120°, 180°	

Dimensional features

Dimensions (WxDxH mm)	730 x 855 x 700
Weight (kg)	78,4
Distance between rack rails (mm)	68

Optionals

Available in the dedicated section

Electrical features

Power supply (kW)	7,8
Frequency (Hz)	50/60
Voltage (V)	AC 380/400 3N
N° motors	1 bidirectional
Boiler (kW)	/
Protection against water	IPX4

Functional features

Power	Electricity
Capacity	N° 5 trays/grids 1/1 GN
Type of cooking	Ventilated
Steam	Direct steam controlled by knob (5 levels)
Cooking chamber	AISI 304 stainless steel
Temperature	100 - 270 °C
Temperature control	Thermostat
Control panel	Electromechanic - right side
N° programs	/
Programmable cooking steps	/
Pre-heating temperature	/
Pre-heating function	/
Door	Right side opening Ventilated Inspectionable glass
Modularity	Yes
Feet	Adjustable